



## Automatic Parts Loader

The Haas Automatic Parts Loader is a simple and affordable way to automate part production and boost productivity. It is designed and built exclusively for use on Haas turning centers and VMCs, and connects directly to the Haas control.

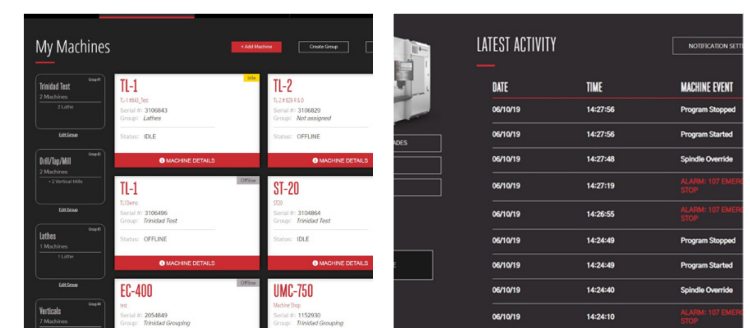
- All-inclusive design, with plug-and-play capabilities
- Interfaces directly with the Haas control
- Accommodates parts up to 6" length x 6" width x 10 lb (152 mm x 152 mm x 4.5 kg)
- Includes light curtain for safe operation
- Made in the USA



**APLs AVAILABLE ON:**  
**VF Series Vertical Mills:**  
 VF-1, 2, 2SS, 2YT, 2SSYT, VM-2  
**UMC Series:**  
 UMC-500, 500SS  
**ST Series Turning Centers:**  
 ST-10Y, 15Y, 20, 20Y, 25, 25Y, 28, 28Y

## MyHaas: Meet Your New Fleet Management

View detailed information about your machines, including serial numbers, build dates, warranty start/end dates, product details, and machine option details. **Sign up now at HaasCNC.com/myhaas**



**Manage Your Machines**  
 Customize your dashboard to manage and group all Haas machines in your fleet (both NGC and Classic).

**Machine Activities**  
 Up-to-the-minute event tracking for a single machine, or your entire fleet – all in one window.









**HaasDrop**  
 HaasDrop is a fast and convenient method for sending images, videos, and even program files from a mobile device directly to a Haas NextGen Control. Download the free app, and start transferring files directly to the Haas control.

## Local Support & Unbeatable Service

When you purchase a Haas, you gain access to a global network of highly skilled Haas service engineers and local Haas Factory Outlets (HFOs). Plus, you'll have 24/7 access to online technical documents, operator manuals, and video tutorials. From installation and training, to service and technical support – Haas has you covered.

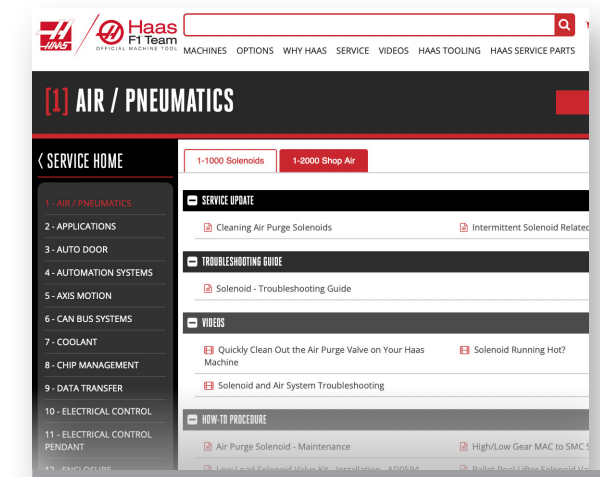


### Online Resources

Access our manuals, drawings, and instructional videos online, 24/7 – to help you learn about, operate, and maintain your Haas CNC machine.

### Haas Platinum One-Call Service

Get expert service and a dependable, immediate response to keep you making chips.



### Certified Technicians

Every Haas Factory Outlet fields a complete service department staffed with factory-trained and -certified personnel. Haas owners receive state-of-the-art service through our worldwide network of Haas Factory Outlets.

### Local Parts Availability

Every Haas Factory Outlet stocks an extensive inventory of service and maintenance parts for quick access. Our California headquarters can ship a needed replacement part to the HFO the same day it's ordered – 99% of the time.

### Fair Spares Pricing

We believe that reasonably priced replacement parts are a big part of a machine's overall value. We're not interested in gouging a customer in need. Your loyalty is more important.

Visit [parts.HaasCNC.com](http://parts.HaasCNC.com).









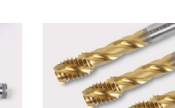



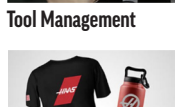

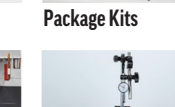
**HaasTooling.com**

Haas Tooling sells high-performance end mills, shell mills, toolholders, and just about every other tool that your machine shop needs! What originally started with cutting tools, has now expanded into other tooling categories, including partnerships with industry leaders like Kurt and Jergens. We only sell tools that we believe in, and each tool that is found on HaasTooling.com has gone through rigorous testing on Haas machines before becoming available to you.

- Delivered directly to you
- Tested and proven on Haas machines; available for all machines
- Ready2Run Kits

**4 Easy Ways to Buy:**

- Online
- With your machine
- From your local HFO
- Through the MyHaas app

 Mill Toolholding	 Mill Workholding	 Milling
 Lathe Toolholding	 Lathe Toolholding	 Lathe Workholding
 ER Collets & Chucks	 Holemaking	 Threading
 Tool Management	 Tool Accessories	 Package Kits
 Apparel & Accessories	 Storage & Handling	 Measuring & Inspection

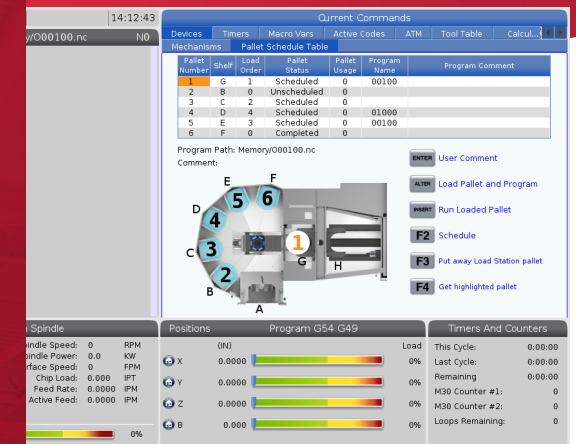


# MODEL GUIDE



HIGH-PERFORMANCE MACHINE TOOLS

## AUTOMATION IS IN OUR DNA



### PALLET POOLS AVAILABLE ON:

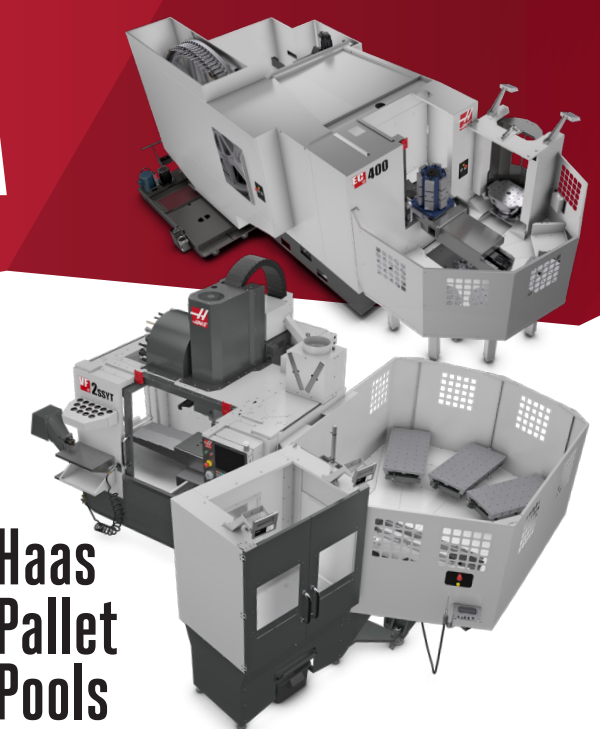
- UMC-500/SS
- UMC-750/SS
- UMC-1000/SS
- UMC-1250/SS
- EC-400
- VC-400/SS
- VF-2YT/SS



*Completely Programmed on the Haas Control!*

### ROBOT PACKAGES AVAILABLE ON:

- All VF-1 through VF-11 VMCs, both 40T and 50T models
- All VMs
- UMC-350HD, and UMC-500/750/1000
- All ST-10 through ST-35 turning centers, including Y-axis models
- Also now available on DTs and DMs



## Haas Pallet Pools

Haas Pallet Pool systems are perfect for high-volume production runs, or high-mix/low-volume machining. They integrate seamlessly with the Haas control, which includes a simplified Pallet Schedule Table that allows pallet-scheduling functions from a single dedicated screen.

Pallets can be scheduled individually according to priority and sequencing requirements, allowing high-priority parts to be machined first or staged more often. Completed pallets are returned automatically to the holding location, or can be sent to a protected operator station for immediate unloading and reloading.

## Haas Robot Packages

- Package 1 7 kg capacity, 6-axis robot system
- Package 2 25 kg capacity, 6-axis robot system
- Package 3 50 kg capacity, 6-axis robot system

Haas Robot Packages are all inclusive robotic automation solutions for your Haas machine. Everything needed to start automatic loading and unloading of parts is included (robot, stand, fence, etc.), so you can be up and running, fully automated, in a couple of hours, not days.

FIND OUT MORE AT  
[WWW.HAASCNC.COM](http://WWW.HAASCNC.COM)

Machine With Available Option(s):

- ▲ Automatic Parts Loader
- Pallet Pool
- Robot System



### Small

<span style="color: red;">▲</span> VF-1	20" x 16" x 20" (xyz) 508 x 406 x 508 mm	<span style="color: blue;">■</span> VF-4SS Super Speed	50" x 20" x 25" (xyz) 1270 x 508 x 635 mm	<span style="color: blue;">■</span> VF-7	84" x 32" x 30" (xyz) 2134 x 813 x 762 mm
<span style="color: red;">▲</span> VF-2	30" x 16" x 20" (xyz) 762 x 406 x 508 mm	<span style="color: blue;">■</span> VF-5	50" x 26" x 25" (xyz) 1270 x 660 x 635 mm	<span style="color: blue;">■</span> VF-7/50	84" x 32" x 30" (xyz) 2134 x 813 x 762 mm
<span style="color: red;">▲</span> VF-2SS Super Speed	30" x 16" x 20" (xyz) 762 x 406 x 508 mm	<span style="color: blue;">■</span> VF-5SS Super Speed	50" x 26" x 25" (xyz) 1270 x 660 x 635 mm	<span style="color: blue;">■</span> VF-8	64" x 40" x 30" (xyz) 1626 x 1016 x 762 mm
<span style="color: blue;">■</span> VF-2TR 5-Axis	30" x 16" x 20" (xyz) 762 x 406 x 508 mm	<span style="color: blue;">■</span> VF-5TR 5-Axis	50" x 26" x 25" (xyz) 1270 x 660 x 635 mm	<span style="color: blue;">■</span> VF-8/50	64" x 40" x 30" (xyz) 1626 x 1016 x 762 mm
<span style="color: red;">▲</span> VF-2YT	30" x 20" x 20" (xyz) 762 x 508 x 508 mm	<span style="color: blue;">■</span> VF-5XT	60" x 26" x 25" (xyz) 1524 x 660 x 635 mm	<span style="color: blue;">■</span> VF-9	84" x 40" x 30" (xyz) 2134 x 1016 x 762 mm
<span style="color: red;">▲</span> VF-2SSYT Super Speed	30" x 20" x 20" (xyz) 762 x 508 x 508 mm	<span style="color: blue;">■</span> VF-5/50	50" x 26" x 25" (xyz) 1270 x 660 x 635 mm	<span style="color: blue;">■</span> VF-9/50	84" x 40" x 30" (xyz) 2134 x 1016 x 762 mm

### Medium

<span style="color: blue;">■</span> VF-3	40" x 20" x 25" (xyz) 1016 x 508 x 635 mm	<span style="color: blue;">■</span> VF-5/50TR 5-Axis	50" x 26" x 25" (xyz) 1270 x 660 x 635 mm	<span style="color: blue;">■</span> VF-10	120" x 32" x 30" (xyz) 3048 x 813 x 762 mm
<span style="color: blue;">■</span> VF-3SS Super Speed	40" x 20" x 25" (xyz) 1016 x 508 x 635 mm	<span style="color: blue;">■</span> VF-5/50XT	60" x 26" x 25" (xyz) 1524 x 660 x 635 mm	<span style="color: blue;">■</span> VF-10/50	120" x 32" x 30" (xyz) 3048 x 813 x 762 mm
<span style="color: blue;">■</span> VF-3YT	40" x 26" x 25" (xyz) 1016 x 660 x 635 mm	<b>Large</b>		<span style="color: blue;">■</span> VF-11	120" x 40" x 30" (xyz) 3048 x 1016 x 762 mm
<span style="color: blue;">■</span> VF-3SSYT Super Speed	40" x 26" x 25" (xyz) 1016 x 660 x 635 mm	<span style="color: blue;">■</span> VF-6	64" x 32" x 30" (xyz) 1626 x 813 x 762 mm	<span style="color: blue;">■</span> VF-11/50	120" x 40" x 30" (xyz) 3048 x 1016 x 762 mm
<span style="color: blue;">■</span> VF-3YT/50	40" x 26" x 25" (xyz) 1016 x 660 x 635 mm	<span style="color: blue;">■</span> VF-6SS Super Speed	64" x 32" x 30" (xyz) 1626 x 813 x 762 mm	VF-12	150" x 32" x 30" (xyz) 3810 x 813 x 762 mm
<span style="color: blue;">■</span> VF-4	50" x 20" x 25" (xyz) 1270 x 508 x 635 mm	<span style="color: blue;">■</span> VF-6TR 5-Axis	64" x 32" x 30" (xyz) 1626 x 813 x 762 mm	VF-12/50	150" x 32" x 30" (xyz) 3810 x 813 x 762 mm
		<span style="color: blue;">■</span> VF-6/50	64" x 32" x 30" (xyz) 1626 x 813 x 762 mm	VF-14/40	150" x 40" x 30" (xyz) 3810 x 1016 x 762 mm
		<span style="color: blue;">■</span> VF-6/50TR 5-Axis	64" x 32" x 30" (xyz) 1626 x 813 x 762 mm	VF-14/50	150" x 40" x 30" (xyz) 3810 x 1016 x 762 mm

### Toolroom Series

TM-0	20" x 12" x 16" (xyz) 508 x 305 x 406 mm	
TM-0P Tool Changer	20" x 12" x 16" (xyz) 508 x 305 x 406 mm	
TM-1	30" x 16" x 16" (xyz) 762 x 406 x 406 mm	
TM-1P Tool Changer	30" x 16" x 16" (xyz) 762 x 406 x 406 mm	
TM-2	40" x 16" x 16" (xyz) 1016 x 406 x 406 mm	
TM-2P Tool Changer	40" x 16" x 16" (xyz) 1016 x 406 x 406 mm	

### Robot Packages

Package 1	7 kg cap. / 6-axis robot
Package 2	25 kg cap. / 6-axis robot
Package 3	50 kg cap. / 6-axis robot
Fully integrated with the Haas control. No 3rd-party integration needed.	

### Universal Machines

UMC-350SS 30 Taper	15" x 14" x 12" (xyz) 381 x 356 x 305 mm	<span style="color: blue;">■</span> UMC-500	24" x 16" x 16" (xyz) 610 x 406 x 406 mm
<span style="color: blue;">■</span> UMC-350HD 40 Taper	15" x 14" x 12" (xyz) 381 x 356 x 305 mm	<span style="color: blue;">■</span> UMC-500SS Super Speed	24" x 16" x 16" (xyz) 610 x 406 x 406 mm
<span style="color: blue;">■</span> UMC-500	24" x 16" x 16" (xyz) 610 x 406 x 406 mm	<span style="color: blue;">■</span> UMC-750	30" x 20" x 20" (xyz) 762 x 508 x 508 mm
<span style="color: blue;">■</span> UMC-500SS Super Speed	24" x 16" x 16" (xyz) 610 x 406 x 406 mm	<span style="color: blue;">■</span> UMC-750SS Super Speed	30" x 20" x 20" (xyz) 762 x 508 x 508 mm
<span style="color: blue;">■</span> UMC-750	30" x 20" x 20" (xyz) 762 x 508 x 508 mm	<span style="color: blue;">■</span> UMC-1000	40" x 25" x 25" (xyz) 1016 x 635 x 635 mm
<span style="color: blue;">■</span> UMC-750SS Super Speed	30" x 20" x 20" (xyz) 762 x 508 x 508 mm	UMC-1000-P Profiling	40" x 25" x 25" (xyz) 1016 x 635 x 635 mm
<span style="color: blue;">■</span> UMC-1000	40" x 25" x 25" (xyz) 1016 x 635 x 635 mm	<span style="color: blue;">■</span> UMC-1000SS Super Speed	40" x 25" x 25" (xyz) 1016 x 635 x 635 mm
UMC-1000-P Profiling	40" x 25" x 25" (xyz) 1016 x 635 x 635 mm	UMC-1000SS-P Super Speed + Profiling	40" x 25" x 25" (xyz) 1016 x 635 x 635 mm
<span style="color: blue;">■</span> UMC-1000SS Super Speed	40" x 25" x 25" (xyz) 1016 x 635 x 635 mm	<span style="color: blue;">■</span> UMC-1250 Super Speed	50" x 30" x 28" (xyz) 1270 x 762 x 711 mm
UMC-1000SS-P Super Speed + Profiling	40" x 25" x 25" (xyz) 1016 x 635 x 635 mm	<span style="color: blue;">■</span> UMC-1250SS Super Speed	50" x 30" x 28" (xyz) 1270 x 762 x 711 mm
<span style="color: blue;">■</span> UMC-1250 Super Speed	50" x 30" x 28" (xyz) 1270 x 762 x 711 mm	UMC-1500-DUO Dual Table	60" x 20" x 20" (xyz) 1524 x 508 x 508 mm
<span style="color: blue;">■</span> UMC-1250SS Super Speed	50" x 30" x 28" (xyz) 1270 x 762 x 711 mm	<span style="color: blue;">■</span> UMC-1500SS-DUO Dual Table Super Speed	60" x 20" x 20" (xyz) 1524 x 508 x 508 mm
UMC-1500-DUO Dual Table	60" x 20" x 20" (xyz) 1524 x 508 x 508 mm	UMC-1600-H 50 Taper	64" x 50" x 40" (xyz) 1626 x 1270 x 1016 mm
<span style="color: blue;">■</span> UMC-1500SS-DUO Dual Table Super Speed	60" x 20" x 20" (xyz) 1524 x 508 x 508 mm		

### Drill/Tap/Mill Series

<span style="color: blue;">■</span> DT-1 30 Taper	20" x 16" x 15.5" (xyz) 508 x 406 x 394 mm
<span style="color: blue;">■</span> DT-2 30 Taper	28" x 16" x 15.5" (xyz) 711 x 406 x 394 mm
<span style="color: blue;">■</span> DM-1 40 Taper	20" x 16" x 15.5" (xyz) 508 x 406 x 394 mm
<span style="color: blue;">■</span> DM-2 40 Taper	28" x 16" x 15.5" (xyz) 711 x 406 x 394 mm

### Compact Mills

CM-1	12" x 10" x 14" (xyz) 305 x 254 x 356 mm
------	---



### Gantry Series

GR-510	121" x 61" x 11" (xyz) 3073 x 1549 x 279 mm
GR-712	145" x 85" x 11" (xyz) 3683 x 2159 x 279 mm
GM-2 3-Axis	145" x 87.5" x 22" (xyz) 3683 x 2223 x 559 mm
GM-2-5AX 5-Axis	145" x 87.5" x 39.4" (xyz) 3683 x 2223 x 1000 mm

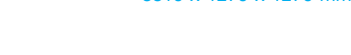


Desktop Mill 6" x 10" x 3" (xyz)  
152 x 254 x 76 mm



### Extra-Large VMC

VS-1	100" x 50" x 50" (xyz) 2540 x 1270 x 1270 mm
VS-3	150" x 50" x 50" (xyz) 3810 x 1270 x 1270 mm



### ST Series

#### Standard

<span style="color: blue;">■</span> ST-10*	12" x 16" (max cap) 305 x 406 mm
<span style="color: blue;">■</span> ST-15*	12" x 16" (max cap) 305 x 406 mm
<span style="color: red;">▲</span> <span style="color: blue;">■</span> ST-20*	13" x 22.5" (max cap) 330 x 572 mm
<span style="color: red;">▲</span> <span style="color: blue;">■</span> ST-25*	13" x 22.5" (max cap) 330 x 572 mm
<span style="color: red;">▲</span> <span style="color: blue;">■</span> ST-28*	13" x 22.5" (max cap) 330 x 572 mm
<span style="color: blue;">■</span> ST-30*	15" x 32.5" (max cap) 381 x 826 mm
<span style="color: blue;">■</span> ST-35*	15" x 32.5" (max cap) 381 x 826 mm



#### Y-Axis

<span style="color: red;">▲</span> <span style="color: blue;">■</span> ST-10Y*	12" x 16" (max cap) 305 x 406 mm
<span style="color: red;">▲</span> <span style="color: blue;">■</span> ST-15Y*	12" x 16" (max cap) 305 x 406 mm
<span style="color: red;">▲</span> <span style="color: blue;">■</span> ST-20Y*	11.75" x 22.5" (max cap) 298 x 572 mm
<span style="color: red;">▲</span> <span style="color: blue;">■</span> ST-25Y*	11.75" x 22.5" (max cap) 298 x 572 mm
<span style="color: red;">▲</span> <span style="color: blue;">■</span> ST-28Y*	11.75" x 22.5" (max cap) 298 x 572 mm
<span style="color: blue;">■</span> ST-30Y*	13.75" x 32.5" (max cap) 349 x 826 mm
<span style="color: blue;">■</span> ST-35Y*	13.75" x 32.5" (max cap) 349 x 826 mm

#### Dual-Spindle

DS-30Y	18" x 23" (max cap) 457 x 584 mm
--------	-------------------------------------

#### Large-Through-Bore

ST-40	25.5" x 44" (max cap) 648 x 1118 mm
ST-40L	25.5" x 80" (max cap) 648 x 2032 mm
ST-45	25.5" x 44" (max cap) 648 x 1118 mm
ST-45L	25.5" x 80" (max cap) 648 x 2032 mm
ST-55	25.5" x 80" (max cap) 648 x 2032 mm

#### Long-Bed Models

<span style="color: blue;">■</span> ST-10L	12" x 32.5" (max cap) 305 x 826 mm
<span style="color: blue;">■</span> ST-10LY	12" x 32.5" (max cap) 305 x 826 mm
<span style="color: blue;">■</span> ST-15L	12" x 32.5" (max cap) 305 x 826 mm
<span style="color: blue;">■</span> ST-15LY	12" x 32.5" (max cap) 305 x 826 mm
<span style="color: blue;">■</span> ST-20L	13" x 42.5" (max cap) 330 x 1080 mm
<span style="color: blue;">■</span> ST-20LY	11.75" x 42.5" (max cap) 298 x 1080 mm
<span style="color: blue;">■</span> ST-25L	13" x 42.5" (max cap) 330 x 1080 mm
<span style="color: blue;">■</span> ST-25LY	11.75" x 42.5" (max cap) 298 x 1080 mm
<span style="color: blue;">■</span> ST-28L	13" x 42.5" (max cap) 330 x 1080 mm
<span style="color: blue;">■</span> ST-28LY	11.75" x 42.5" (max cap) 298 x 1080 mm
<span style="color: blue;">■</span> ST-30L	15" x 62.5" (max cap) 381 x 1588 mm
<span style="color: blue;">■</span> ST-30LY	13.75" x 62.5" (max cap) 349 x 1588 mm
<span style="color: blue;">■</span> ST-35L	15" x 62.5" (max cap) 381 x 1588 mm
<span style="color: blue;">■</span> ST-35LY	13.75" x 62.5" (max cap) 349 x 1588 mm

### Chucker Lathe

CL-1 1" Bar (25 mm)	1" x 8" (max cap) 25.4 x 203 mm
------------------------	------------------------------------



### EC Series

<span style="color: blue;">■</span> EC-400 40 Taper	22" x 25" x 22" (xyz) 559 x 635 x 559 mm
<span style="color: blue;">■</span> EC-500 40 Taper	32" x 25" x 28" (xyz) 813 x 635 x 711 mm
<span style="color: blue;">■</span> EC-500/50 50 Taper	32" x 25" x 28" (xyz) 813 x 635 x 711 mm
<span style="color: blue;">■</span> EC-630 50 Taper	40" x 37" x 40" (xyz) 1016 x 940 x 1016 mm
<span style="color: blue;">■</span> EC-1600 30 Taper	64" x 50" x 32" (xyz) 1626 x 1270 x 813 mm
<span style="color: blue;">■</span> EC-1600ZT 50 Taper	64" x 50" x 40" (xyz) 1626 x 1270 x 1016 mm
<span style="color: blue;">■</span> EC-1600ZT-5AX 5-Axis / 50 Taper	64" x 50" x 40" (xyz) 1626 x 1270 x 1016 mm

### VR Series

VR-8	64" x 40" x 42" (xyz) 1626 x 1016 x 1067 mm
VR-9	84" x 40" x 42" (xyz) 2134 x 1016 x 1067 mm
VR-11	120" x 40" x 42" (xyz) 3048 x 1016 x 1067 mm
VR-14	150" x 40" x 42" (xyz) 3810 x 1016 x 1067 mm

## ROTARIES & INDEXERS

### Small Rotary

HRT100	
HRT160	
HRT160SP	
HRT160SS	
HRC160	
HRT160-2	
HRTA5	

### Medium Rotary

HRT210	
HRT210SS	
HRT210SP	
HRT210M	
HRT210-2	
HRTA6	
HRT310	
HRT310SP	
HRT310SS	

### Large Rotary

HRT450	
HRT600	
HRT630	
HRT800	
HRT1000	

### Single Spindle

HA5C	
HA5C-T	
HA5CS	

### Multiple Spindle

HA5C2	
HA5C2-T	
HA2TS	
HA5C3	
HA5C4	

### Trunnion

TR160	
TR160-2	
TR200Y	
TR210	
TR310	
TR500SS	

### Tilting Rotary

TRT70	
TRT100	
TRT160	
TRT210	
TRT310	

### Through-Hole Rotary

TH240	
TH450	

### Tilting Indexer

T5C	
-----	--